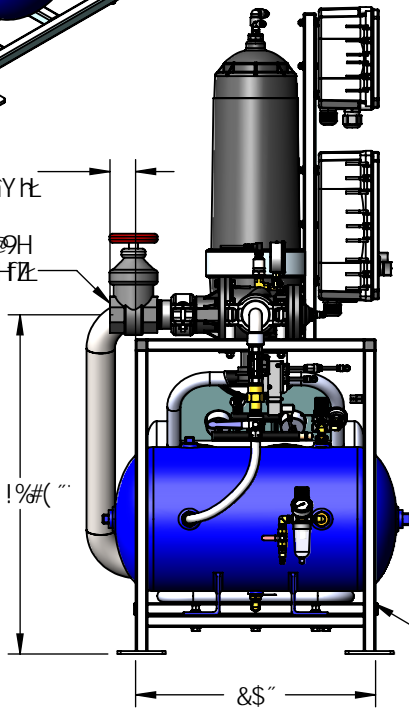


&!%#,"
fBdd`Ygthc`Ci hYtE

Ci H@H
&`BDHFZ

&, !%#(" "



5 Jf FYgYfj cJf
'\$('GUJbYgg
: fUa Y#G_X

5 HB & GK
K UHf FYgYfj cJf
Dc`mUa X`Y`<ci gJb[

DfYgg fy`fHUbGxi Wwf
k #5bUc[; Ui [Y

; UH`JUjY
fCi hYtE

&l`&5b[Y` : ck`JUjY
Dc`mUa X`Y`<ci gJb[
f&`DUWgE

7 cblfc`Yf

5 HB !& GK !:]hYf
Dc`mUa X`Y`<ci gJb[

DfYgg fy`fHUbGxi Wwf
k #5bUc[; Ui [Y

6 UW_Zi g`v`Ci hYh
&`BDHFa t

5 Jf FYgYfj cJf

&<D`5 Jf 7 ca d fYggc f
)`" 7: A`4`- \$`DG=

%#&`<D`Di a d

&!%#/%\"/>

&, !%#(" "

+!%#&\"/>

(!)#," "

DF C 81 7H`GD97 =: =75H`CB

O KNIGHT`NGCO CP HP E

, \$\$`CfUb[Y`5] Y`"8UntcbU`6YUW` : @` &%%(

8F 5K B

7<97? 98

9B: `5DDF"

A?H`5DDF"

G<99H`cZ%FYZ A @&%%+!`\$

>`@Jfgyb`.....%&#&+`#/%\$

GMGH9A`F9E I`F9A 9BHG.

9 YVWfWU: (*`SJ 57#`\$<n#`D\#(5

9 YVWfWU: 5]f`7ca d": %\$S J 57#`\$<n#`D\#(5

9 YVWfWU: 5]hc`8fU]b. %\$S J 57#`\$<n#`D\#(5

5]f Gi dd`m` 7: A`4`- \$!%\$ DG=

B DG<f. *`%Zh

GmghYa`DfYgg fy. (%&) `DG=A UI`#hYa dyFUH fy. %(\$`*`A UI

8f mK Y[]h`" \$`" Vg

H-H@9.

G]b[`Y`DcX`5]f! 5gg]gh
Hi fVc! 8]gW:]hYf`GmghYa
55! 5H8 &f`d! &!`%`\$A! D+\$! 57

Customer	Date	26.10.2020
Contact	Project	
Phone number	Project no.	
Email		

2ST1F9H4

Operating data

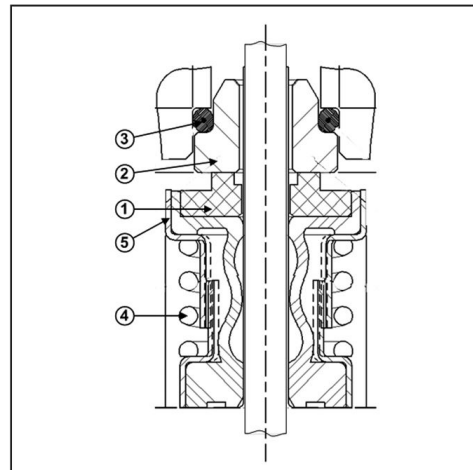
Pump type	End Suction Pumps	Fluid	Water
No. of pumps / Reserve	1 / 0	Operating temperature t A	°F 39.2
Nominal flow	US g.p.m. 70.01	pH-value at t A	7
Nominal head	ft 54.99	Density at t A	lb/ft ³ 62.4
Static head	ft 0	Kin. viscosity at t A	ft ² /s 1.689E-5
Inlet pressure	psi 0	Vapor pressure at t A	psi 14.5
Environmental temperature	°F 68	Solids	0
Available system NPSH	ft 0	Altitude	ft 0

Pump data

Make	Goulds Water Technology	Nominal	US g.p.m. 69.7 (69.7)
Speed	rpm 3500	Flow	Max- US g.p.m. 96
No. of stages	1		Min- US g.p.m.
Max. casing pressure	psi	Nominal	ft 54.6
Max. working pressure	psi 29.5	Head	at Qmax ft 36
Head H(Q=0)	ft 68		at Qmin ft 67.9
Weight	lb On demand	Shaft power	hp 1.5 (1.5)
	Max. inch 6 1/8	Max. shaft power	hp 1.6
Impeller R	designed inch 4 1/4	Efficiency	% 63.38
	Min. inch 4	NPSH 3%	ft 6.1

Shaft Seal

Type 21 NPE	John Crane
NPE Mechanical Seal	
1 - Rotating Face	Carbon
2 - Stationary Face	Silicon Carbide
3 - Elastomers	Viton
4 - Metal Components	ALSI 316 SS



Motor data

Manufacturer	Bluffton	Electric voltage	460 V	Speed	3500 rpm	Insulation class	B
Specific design	3ph TEFC Premium Efficiency			Frame size	56J	Colour	RAL 5010
Type	E07C32E5EB3G	Electric current	2.6 A				
Rated power	1.5 hp	Degree of protection	IP 55				

Remarks:

Customer	Date	26.10.2020
Contact	Project	
Phone number	Project no.	
Email		

2ST1F9H4

Pump Materials

100-Casing	AISI 316L SS
101-Impeller	AISI 316L SS
108-Motor adapter	AISI 316L SS
108A-Motor adapter seal vent/flush	AISI 316L SS
123-Deflector	BUNA-N
184-Seal housing	AISI 316L SS
184 A-Seal housing seal vent/flush	AISI 316L SS
347-Guidevane	AISI 316L SS
349-Seal ring, guidevane	Viton
370-Socket head screws, casing	AISI 410 SS
371-Bolts, motor	Plated Steel
408-Drain and vent plug, casing	AISI 316L SS
412B-O-ring, drain and vent plug	Viton
513-O-ring, casing	Viton
Motor-NEMA standard, 56J flange	-

Remarks:

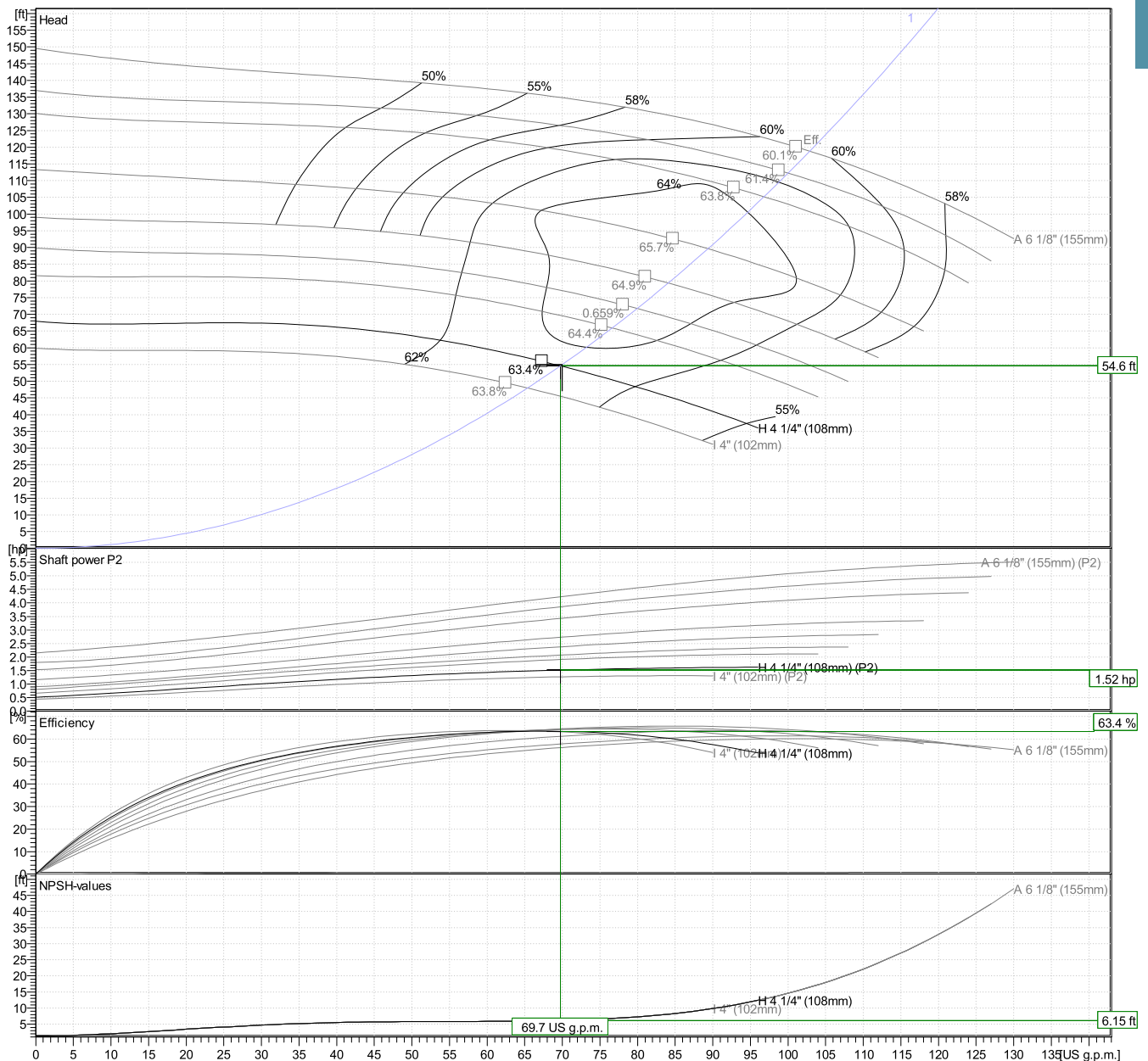
Customer	Date	26.10.2020
Contact	Project	
Phone number	Project no.	
Email		

2ST1F9H4

Hydraulic Data

Operating Data Specification		Hydraulic data (duty point)		Impeller design	
Flow	70 US g.p.m.	Flow	69.7 US g.p.m.	Impeller R	4 1/4"
Head	55 ft	Head	54.6 ft	Frequency	60 Hz
Static head	0 ft			Speed	3500 rpm

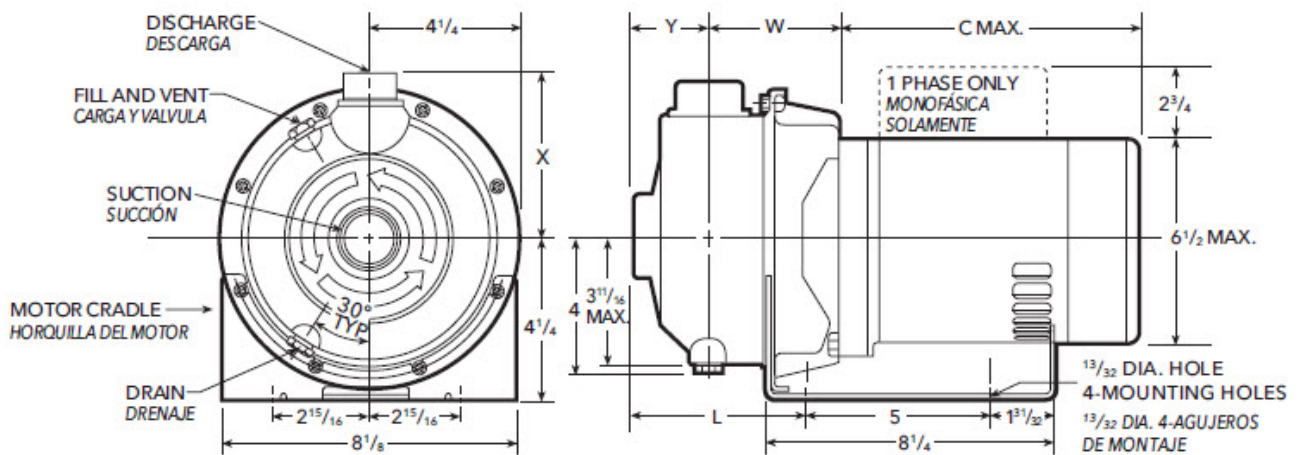
Power data referred to:
 Water [100%] ; 39.2°F; 62.4lb/ft³; 1.69E-5ft²/s
 Performance according to ANSI/HI 14.6 - Grade 2B



Customer	Date	26.10.2020
Contact	Project	
Phone number	Project no.	
Email		

2ST1F9H4

Drawing



Dimensions inch

C Max	12 11/16					Weight On demand [Ⓟ]
Discharge	1 1/4					
L	5 7/8					
Suction	1 1/2					
W	3 3/4					
X	4 1/2					
Y	2 1/8					