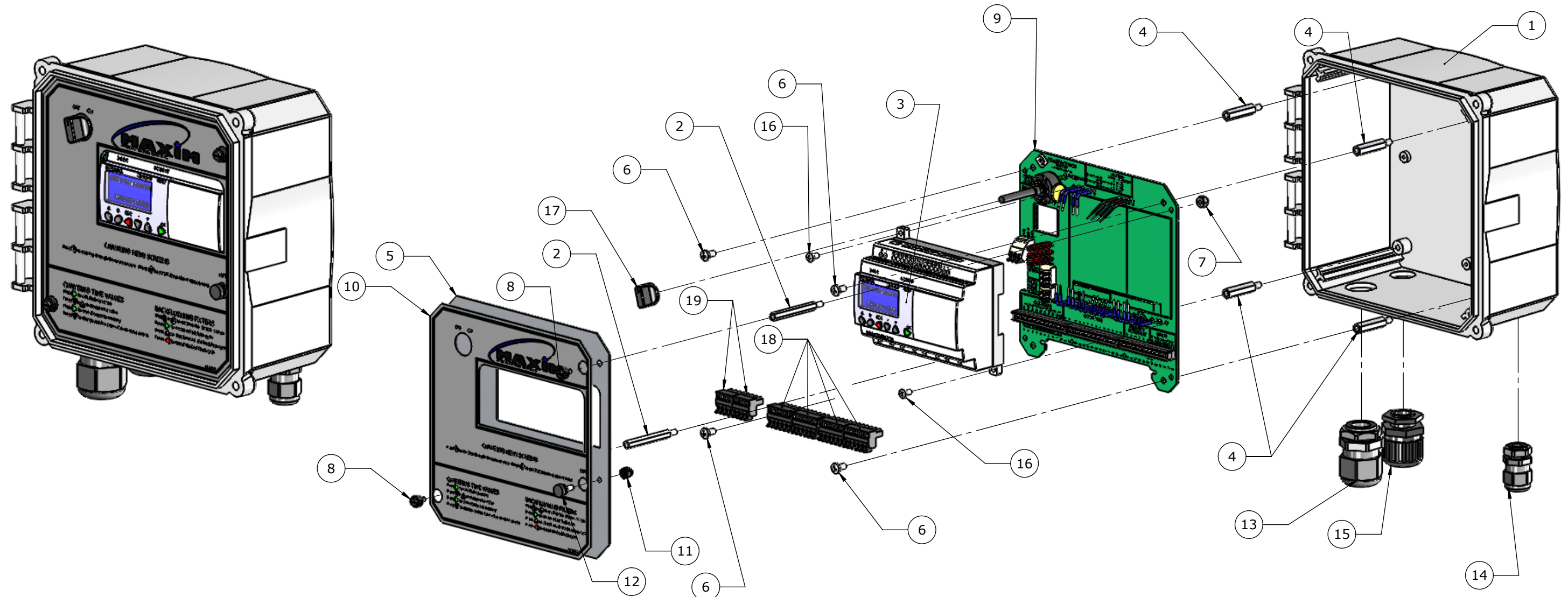


REVISIONS			
REV	DESCRIPTION	DATE	APPROVAL
cler cng	Corrected 4&6 Pin Connector plug part dash numbers.	2/19/2015	DMP



ITEM NO.	PART NUMBER	DESCRIPTION	ML20639-08R NoCvr/QTY.
1	ML10203-15	Enclosure, Maxim Control Box Modified	1
2	PS00253-2	Standoff 2" long, Alum (1/4" hex #8 thread)	2
3	PS01579-2	PLC, Crouzet, 24VDC, 12 in, 8 out SMART	1
4	PS00477-1	Standoff, 1.25" - Alum., 5/16" hex #10 thread	4
5	ML10504-2	Face Plate, for M8 & M10, Millenium 3	1
6	PS90743-0006	Screw, Pan, Phillips head 10-32x0.375x0.375-N	4
7	PS90252-16	Nut, #8-32 Nyloc Hex, Stainless Steel	2
8	PS00497	Thumb Screw, Nylon Black 8-32 x 3/16" Slot-Head	2
9	ML20640-08	M8 Controller Wire Configuration	1
10	ML10545-1	Label Face Plate, M8, M10	1
11	PS00517	Cap Nut, Acorn, Nylon-Black, 8-32	1
12	PS00518	Thumb Screw, Nylon Black-8-32 x 3/8"	1
13	PS00046-04	Strain Relief, 3/4" NPT	1
14	PS00046-02	Strain Relief, 3/8" NPT	1
15	PS00639-03	Strain Relief, Conduit, 1/2NPT x 1/2 Cond, DOF N-FGW21-21-B	1
16	PS90739-0005	Screw, 8-32 x 5/16 stainless phillips pan head screw	2
17	PS00481	Knob, Black Plastic, 1/4" Shaft	1
18	PS00483-6	Connector Plug, Spring Latch, 5mm 6 Pin	4
19	PS00483-4	Connector Plug, Spring Latch, 5 mm 4 pin	2

SEE SHEET 2 OF 2 FOR ELECTRICAL SCHEMATIC

PROPRIETARY AND CONFIDENTIAL
 THE INFORMATION CONTAINED IN THIS DRAWING IS THE SOLE PROPERTY OF MILLER - LEAMAN INC. ANY REPRODUCTION IN PART OR AS A WHOLE WITHOUT THE WRITTEN PERMISSION OF MILLER-LEAMAN INC. IS PROHIBITED.

UNLESS OTHERWISE SPECIFIED: -DIMENSIONS ARE IN INCHES -DIMENSIONING & TOLERANCING PER ASME Y14.5 -TOLERANCES: FRACTIONAL: +1/32 ANGULAR: ±1/4° TWO PLACE DECIMAL ±.02 THREE PLACE DECIMAL ±.005	
MATERIAL	DO NOT SCALE DRAWING
FINISH	

NAME	DATE
DRAWN DMP	11/7/2014
RELEASED	
ECN CTRL	
MFG APPR	
Q.A.	

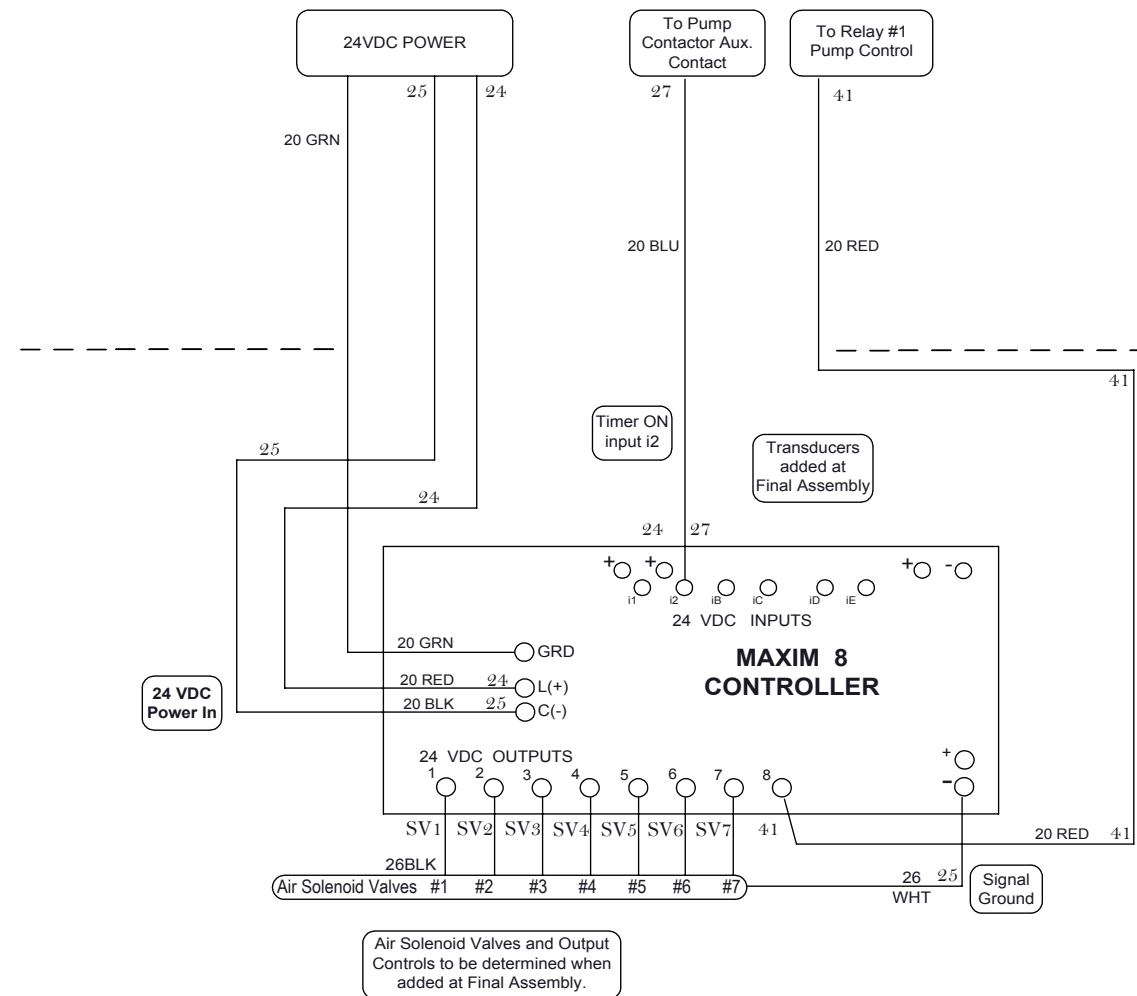
MILLER LEAMAN INC.
 800 Orange Avenue, Daytona Beach, FL 32114

TITLE:
Maxim 8, CD20-24VDC - w/o PD Gauge, Power Supply, & outlet

SIZE DWG. NO. REV
B ML20639-08R --

SCALE: 1:12 WEIGHT: SHEET 1 OF 2

Starter Box Connections



PROPRIETARY AND CONFIDENTIAL
 THE INFORMATION CONTAINED IN THIS DRAWING IS THE SOLE PROPERTY OF MILLER-LEAMAN INC.
 ANY REPRODUCTION IN PART OR AS A WHOLE WITHOUT THE WRITTEN PERMISSION OF MILLER-LEAMAN INC. IS PROHIBITED.

UNLESS OTHERWISE SPECIFIED:		NAME	DATE
- DIMENSIONS ARE IN INCHES	DRAWN	DMP	11/11/2014
- DIMENSIONS & TOLERANCES PER ASME Y15.5 STANDARDS	CHECKED		
- TOLERANCES:	ENG APPR		
FRACTIONAL +/- 1/32	MFG APPR		
ANGULAR +/- 1/4 deg	Q.A.		
TWO PLACE DECIMAL +/- .02	COMMENTS:		
THREE PLACE DECIMAL +/- .005			
MATERIAL			
FINISH			
DO NOT SCALE DRAWING			

MILLER - LEAMAN INC
 800 Orange Avenue, Daytona Beach, FL 32114

TITLE:
**Electrical Schematic
 Maxim 8 Controller, CD20, 24VDC,
 No DP Gauge, No Power Supply**

SIZE: **B** DWG. NO.: **ML20639-08R**

SCALE: 1:1 WEIGHT: SHEET 2 OF 2