



OWNER'S MANUAL ADDENDUM

Rinse Nozzle Assembly

I. SAFETY CONSIDERATIONS

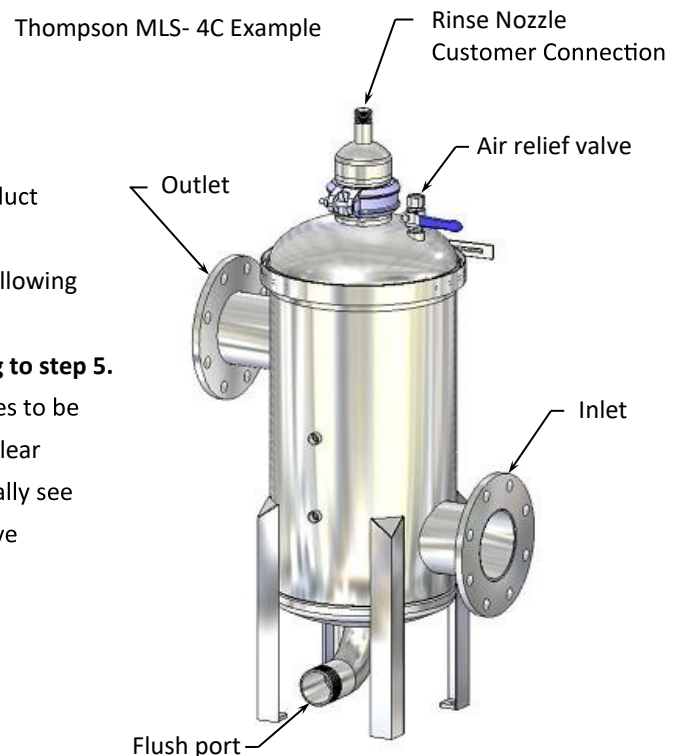
	<p align="center">GENERAL WARNING</p> <p>Ensure all appropriate personnel read owner's manual prior to installation and/or operation of strainer. Failure to comply with instructions and safety precautions could lead to personal injury or product damage. Please call (386) 248-0500 and ask to speak with one of our customer service representatives if there are any questions.</p>
	<p align="center">CAUTION</p> <p>Always wear Personal Protective Equipment (PPE) - Eye protection, Ear protection, gloves, and protective footwear.</p>

II. REQUIREMENTS

1. Isolation valves must be installed in line to the Inlet, Outlet, Flush Port and rinse nozzle connection.
2. Reference Section V. Rinse Nozzle Data and select the Thompson Strainer model for the required pressure at the rinse nozzle connection for optimum performance.

III. ISOLATION PROCEDURE FOR SCREEN ELEMENT RINSING

1. **Inlet** - Close the isolation valve.
2. **Outlet** - Close the isolation valve.
NOTE: The inlet and outlet isolation valves are to remain closed during the rinsing of the screen element.
3. **Flush Port** - Open the isolation valve. This will allow influent product and heavy particulate to drain from the strainer.
4. **Air Relief** - Open the air relief valve. This will break the vacuum allowing the strainer to drain rapidly.
NOTE: Allow the strainer to drain completely before proceeding to step 5.
5. **Rinse Nozzle** - Open the isolation valve. This will allow particulates to be rinsed off the surface of the screen element to the flush port. A clear section of tubing may be installed in line at the flush port to visually see particulates and determine the length of time needed for effective cleaning of the screen element for your particular application.

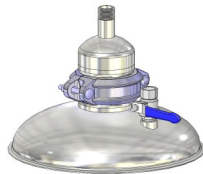


IV. RETURN TO FILTRATION

1. **Rinse Nozzle** - Close isolation valve.
2. **Inlet** - Open isolation valve for a short period then close the isolation valve. This will aid in flushing particulate out of the riser pipe, off the screen element and out of the flush port.
3. **Outlet** - Open isolation valve.
4. **Inlet** - Open isolation valve.
5. **Flush Port** - Close isolation valve.
6. **Air Relief** - Close air relief valve when excess air has been discharged.

V. RINSE NOZZLE DATA

Strainer Model Prefix	Customer Connection	Rinse Nozzle Pipe Size	Spray Angle	Orifice Dia.	Free Passage Dia.	Pressure PSI	Capacity-GPM		
MLS-2	3/4" (3/4"Tri-Clamp)	3/8"	60°	5/16"	1/8"	50	18	▪	▪
MLS-3 & MLS-4	3/4" (3/4"Tri-Clamp)	1/2"	60°	3/8"	3/16"	60	▪	28	▪
MLS-6	1"	3/4"	60°	1/2"	3/16"	60	▪	50	▪
MLS-8, MLS-10, MLS-12, & MLS-14	1"	1"	60°	5/8"	1/4"	100	▪	▪	108



800 Orange Avenue, Daytona Beach, FL 32114
Phone: (386) 248-0500 / Fax: (386) 248-3033

Office Hours: 8 AM – 5 PM Eastern Time
Web: www.millerleaman.com
Email: support@millerleaman.com